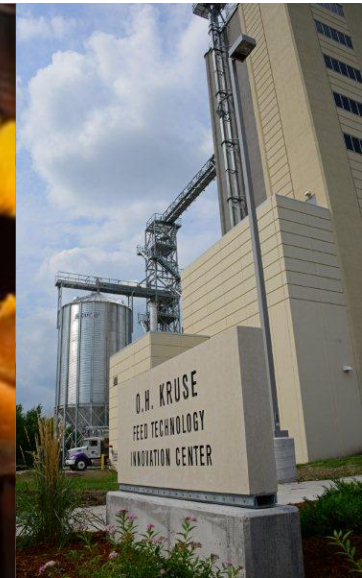


Grain Science Innovation Campus – Key Asset for the K-State Global Food Systems Initiative


KSU Working with Industry Boot Camp February 12, 2015



Presented by:
Dr. Dirk E. Maier
Professor



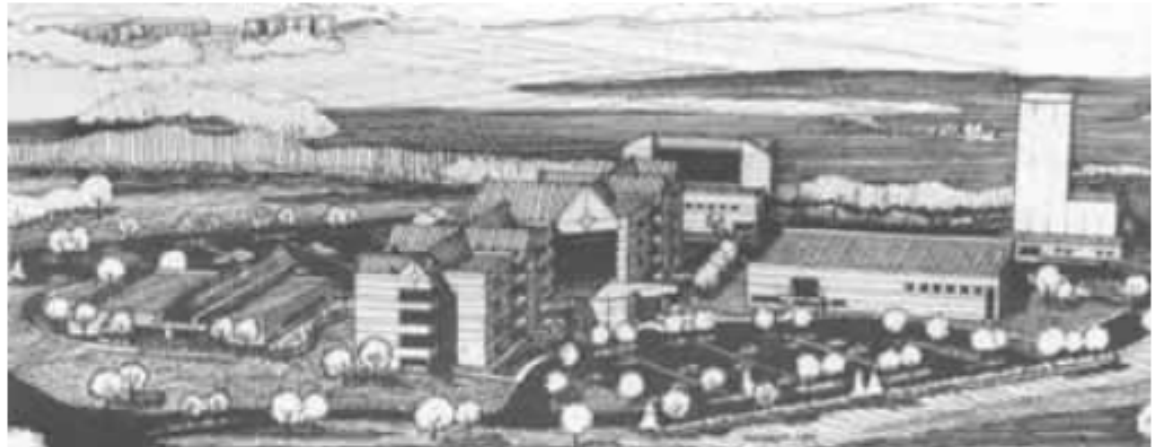
Vision for K-State's Grain Science & Industry Department



*“The **global** education, research and technology transfer **leader** for the grain & plant-based food, feed, fiber, fuel and bio-products supply chains.”*

Strategic Plan Themes

1. Educate undergraduate and graduate students, and industry professionals.
 2. Conduct innovative basic and applied research, and transfer new technology and knowledge to end users.
 3. Offer high-quality outreach programs and services to meet domestic and international customer needs and stakeholder expectations.
 4. Recruit, retain, reward and develop high quality faculty, and professional and classified staff.
 5. **Develop, maintain and utilize state-of-the-art facilities and equipment.**
 6. Broaden funding base and improve financial stewardship.
- ➔ **Department strategic plan aligns with K-State 2025 Visionary Plan and COA/KSRE Strategic Plan**



Vision for KSU Grain Science Innovation Campus (ca. 1999)

International Grains Program Institute

Our Mission

*To provide **innovative** and **relevant** education and technical programs to enhance the market preference, consumption and utilization of U.S. cereal grains, oilseeds and their value added products for the **global grain industry***

The 20,000 ft², \$4 million IGP Conference Center dedicated in May 2004 includes conference, meeting and class rooms for the continuing education of industry professionals from around the globe.



Bioprocessing & Industrial Value Added Products Innovation Center

*To develop biomaterials processing technology and utilize agricultural-based materials to produce higher-value food, feed, and industrial uses products for **economic development**.*

This 33,000 ft², \$7 million facility houses Extrusion, Fermentation and Biomaterials labs. It was dedicated in March 2004.



Hal Ross Flour Mill

Complete 400 cwt/day (24 MT/day) flour mill and grain processing center for teaching, research, training and fee-for-service projects.



The 22,000 ft², \$11 million Hal Ross Flour Mill was dedicated October 20, 2006.





KSU Grain Science Innovation Campus Fall 2011

Kansas Wheat Innovation Center

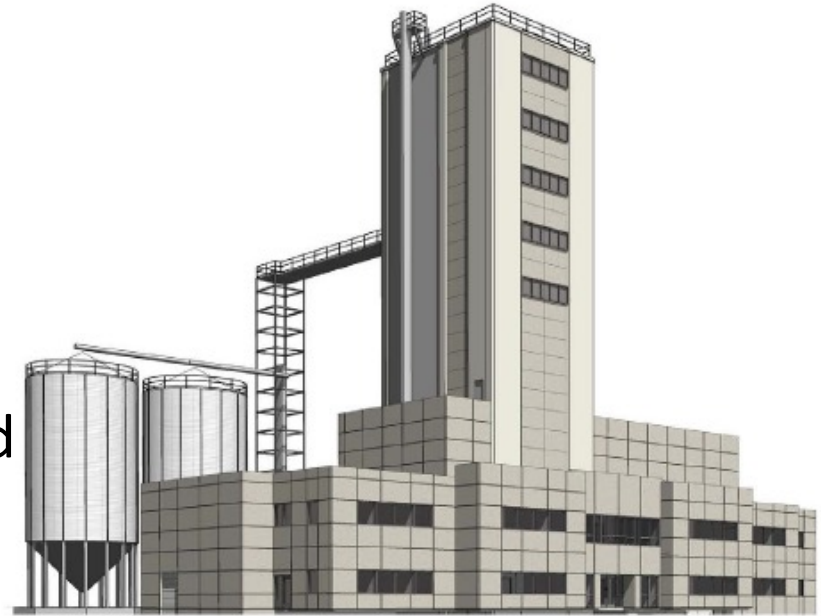
“This project represents the largest single research investment that wheat farmers have ever made in the U.S., and signals a bold step taken by the Kansas Wheat Commission to provide farmers **access to advanced genetics and trait discovery.**” — Richard Randall, KWC Chairman



This 35,000 ft², \$10 million facility houses research labs, greenhouse rooms, and offices including Kansas Wheat and HPI. It was dedicated in April 2013.

O.H. Kruse Feed Technology Innovation Center

- This \$16 million feed processing facility supports **teaching, research, training and fee-for-service projects for the feed and animal production industries.**
- The facility is jointly operated by Grain Science & Industry and Animal Sciences & Industry.
- It includes the Cargill Feed Safety Research Center which is the only BSL-2 pilot lab dedicated for feed and petfood safety research.
- A second project phase will add the Feed and Petfood Science and Education wing with support from **domestic and international grain, feed, petfood and animal nutrition industry and allied trades.**



Project Timeline:

Fall 2011 – secure Phase 1 funds

Summer 2012 – start construction

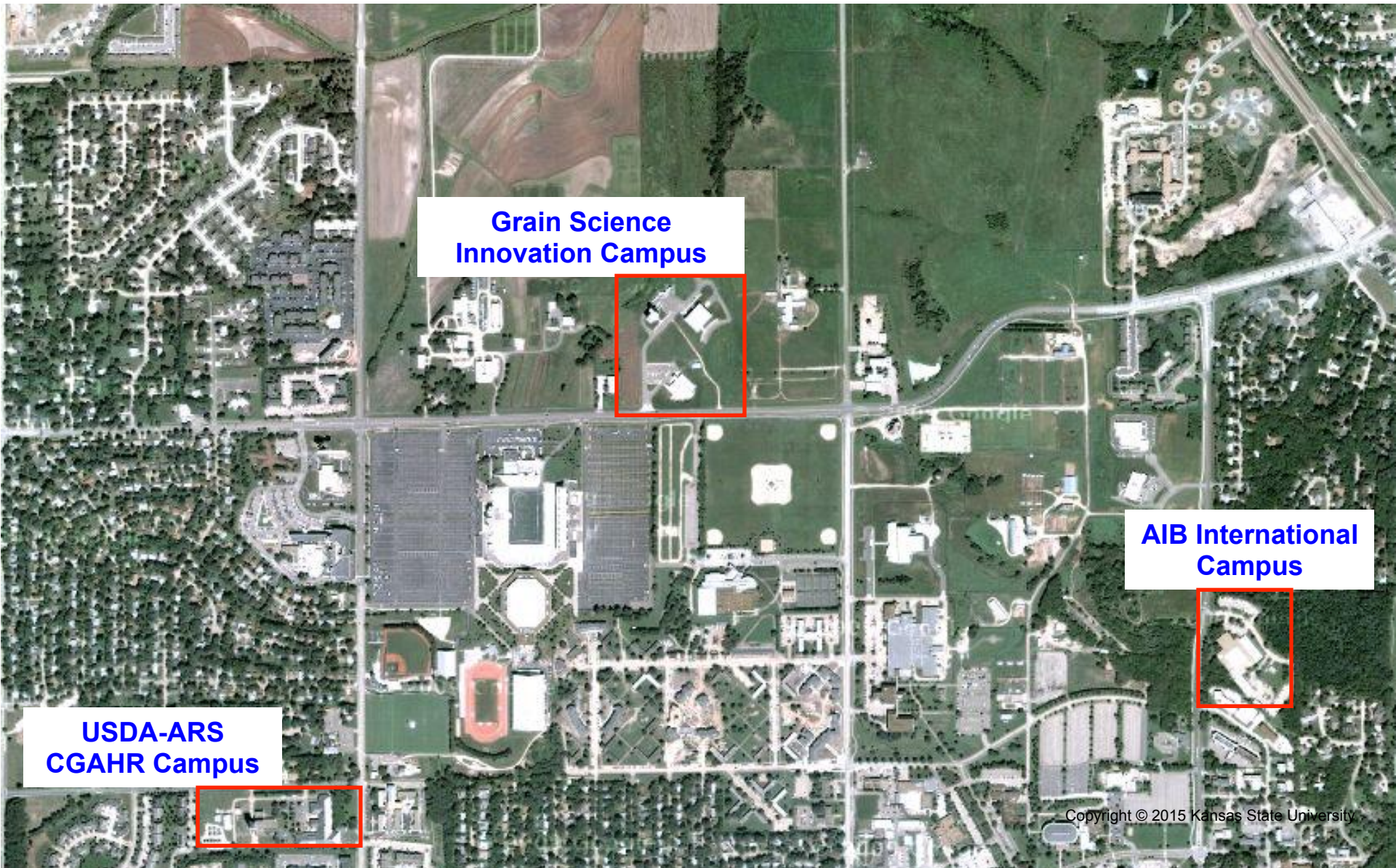
Fall 2013 – complete & commission

October 11, 2013 – Dedication



KSU Grain Science Innovation Campus Summer 2013

Concentration of Globally Unique World Class Grain Science Infrastructure



**Grain Science
Innovation Campus**

**AIB International
Campus**

**USDA-ARS
CGAHR Campus**

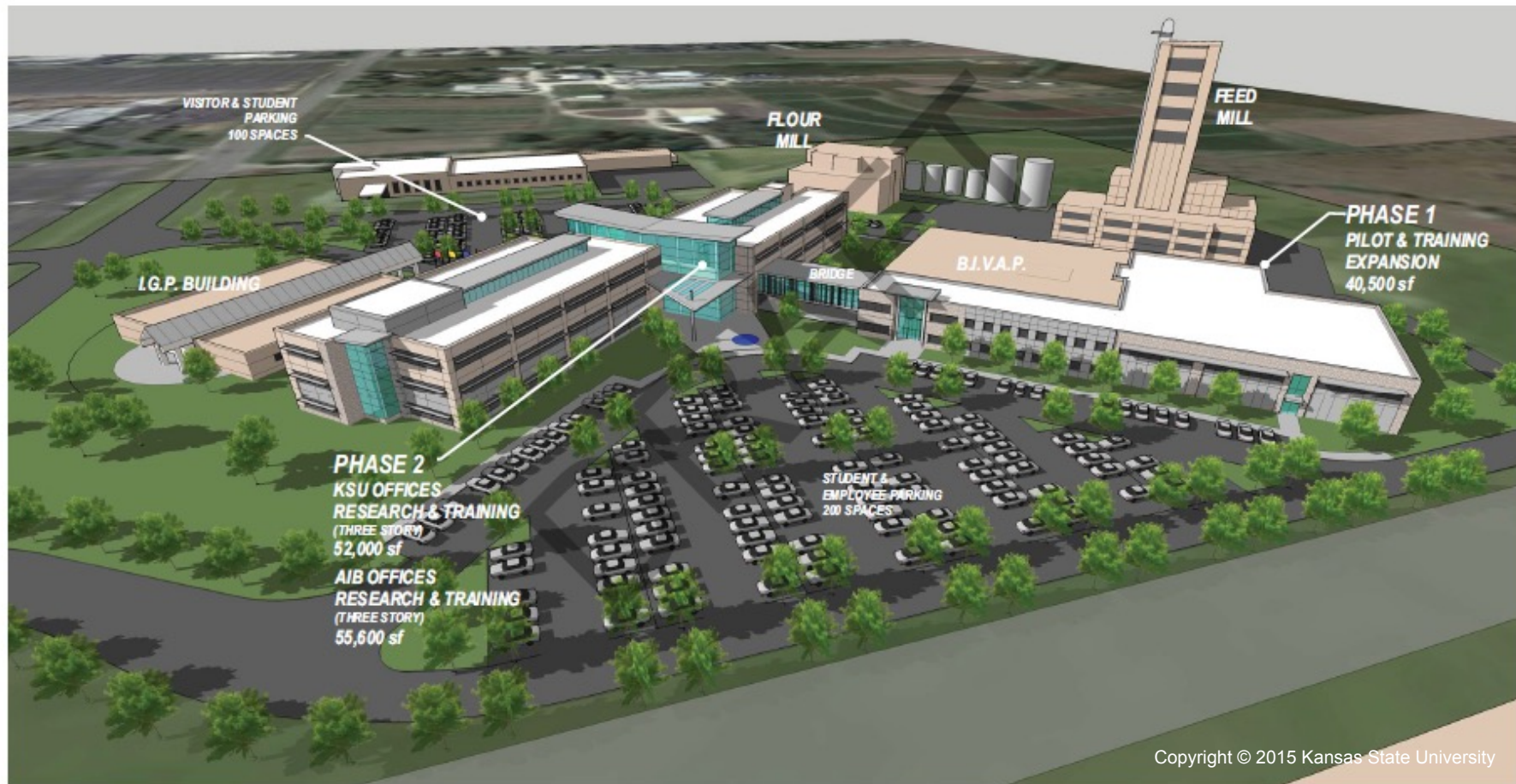
Global Center for Grain-Based Foods

five



GLOBAL CENTER FOR GRAIN-BASED FOODS
LEARNING, RESEARCH, TECHNOLOGY, AND FOOD SAFETY

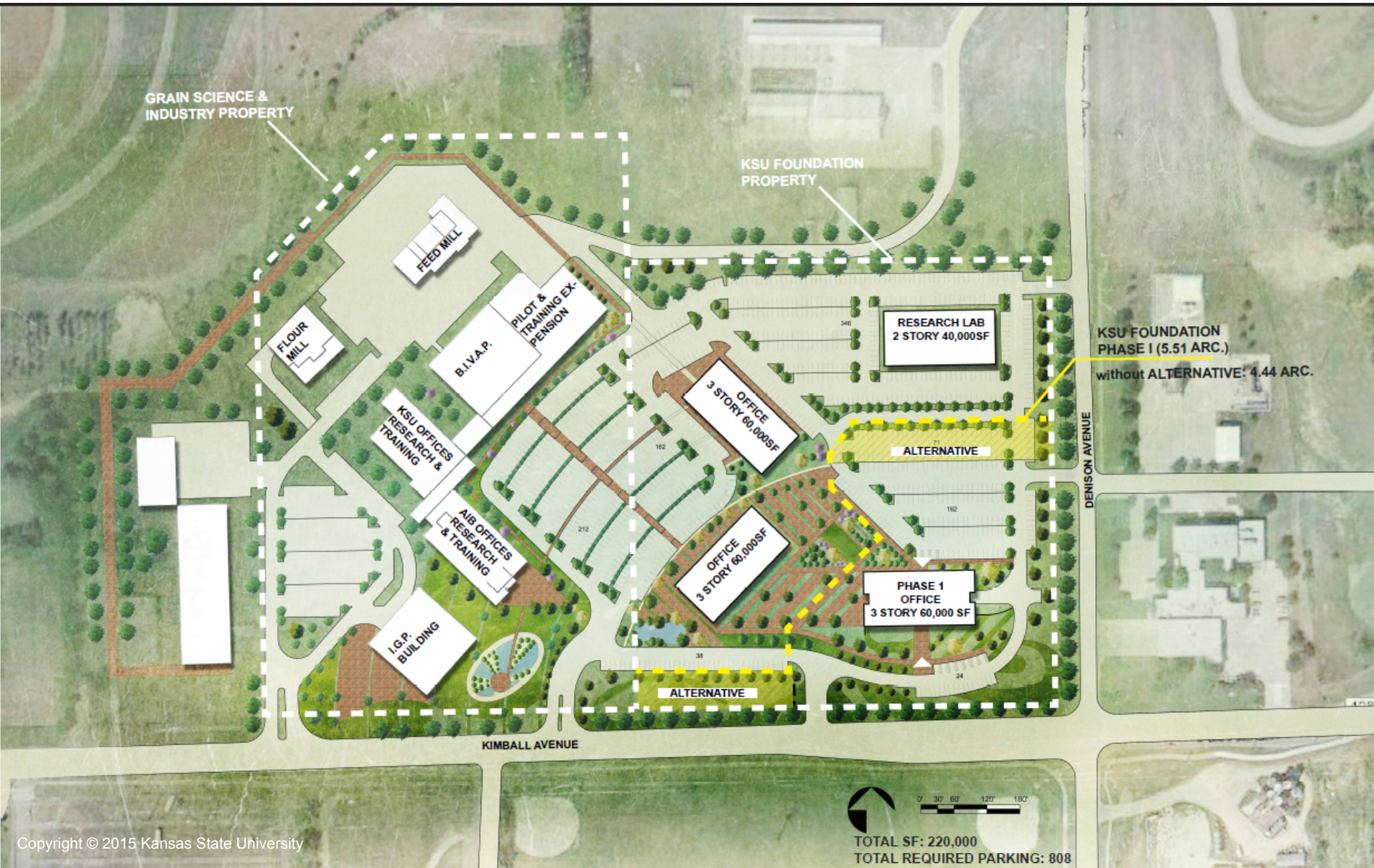
AERIAL VIEW, FROM THE EAST



Copyright © 2015 Kansas State University



Partnership opportunity between KSU/GSI and AIB International, a supporting leg of the KSU Global Food Systems Initiative



KSU Foundation

W HOEFER WYSOCKI
Architecture

11460 Tomahawk Creek Parkway, Suite 400, Leawood, KS 66211

Copyright © 2015 Kansas State University